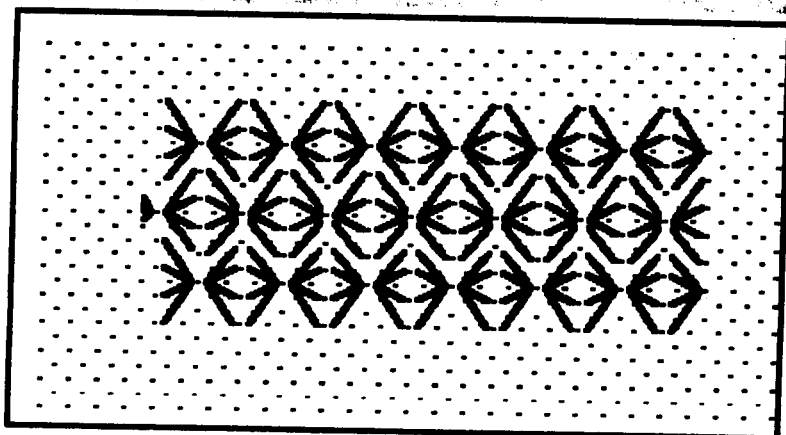
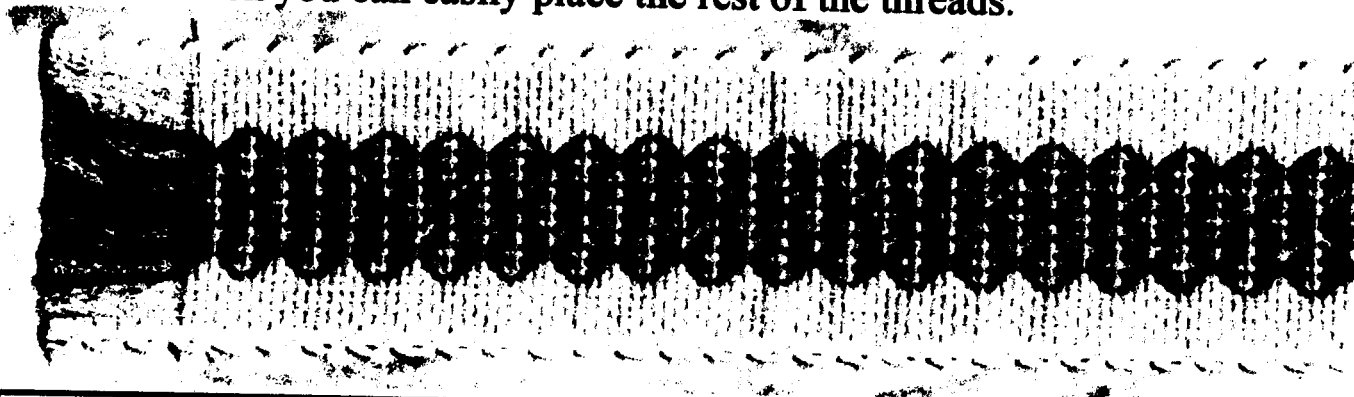


# *Queen Stitch Bookmark*

## *from HereandAbove.com*

*by Deborah K. Lauro*

The model was stitched on a Ribband bookmark with 3 strands of Needle Necessities Floss NN196 "Renaissance". On a small project like a bookmark, you can stitch straight across from one side of the bookmark to the other with floss, but not metallics. If you wish a portion of your design in the exact center, then start your first row (the center row) from the center and work to the sides. Then you can easily place the rest of the threads.



Go to [General Tips for Huck Weaving](#) for more information.

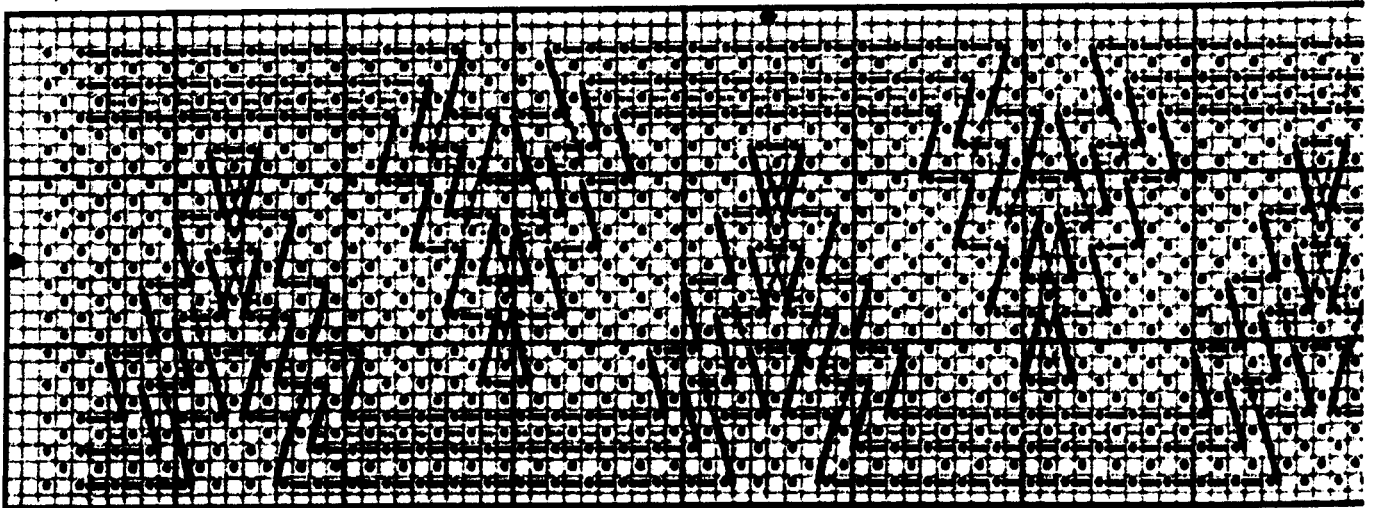
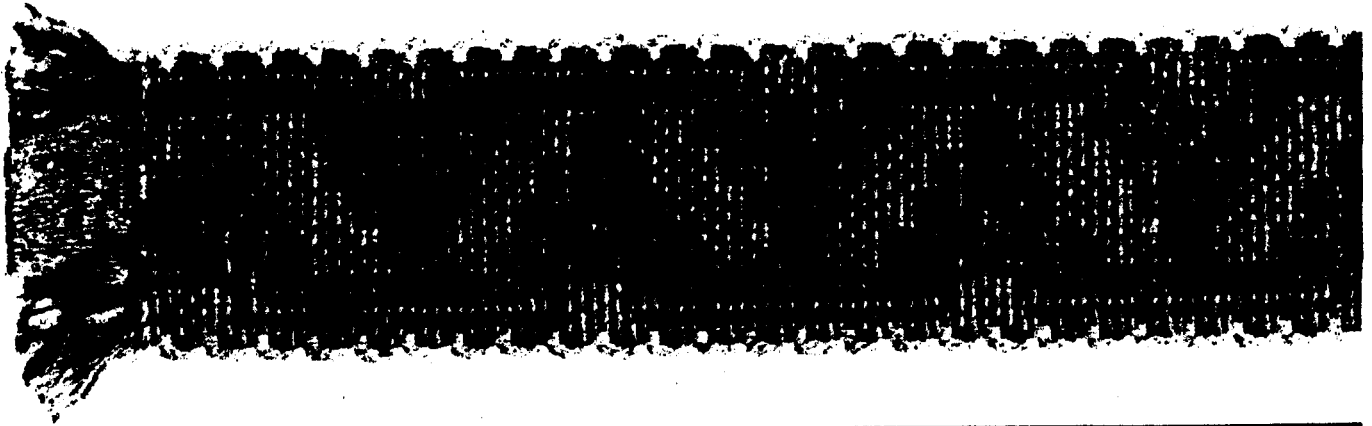
**Copyright 2001** by Deborah K. Lauro at [hereandabove.com](http://hereandabove.com). You are free to photocopy and distribute this pattern for non-commercial purposes. Please leave the copyright and byline intact. Do not place on another website or sell. Shopowners may photocopy and distribute free to patrons. Questions or comments, please email [dlauro@hereandabove.com](mailto:dlauro@hereandabove.com).

# *Trees Bookmark*

## *from HereandAbove.com*

*by Deborah K. Lauro*

The model was stitched on a Ribband bookmark with 3 strands of Needle Necessities Floss NN142 "Grecian Olive". The row of metallic was stitched with one strand each of DMC Metallic #5282 "Gold" and #5283 "Silver". Metallics fray very quickly. Use the minimum length possible, and only insert a short way into the needle. Stitch from the center of the design out. On a small project like a bookmark, you can stitch straight across from one side of the bookmark to the other with floss, but not metallics.



**Copyright 2001 by Deborah K. Lauro at [hereandabove.com](http://hereandabove.com). You are free to photocopy and distribute this pattern for non-commercial purposes. Please leave the copyright and byline intact. Do not place on another website or sell. Shopowners may photocopy and distribute free to patrons. Questions or comments, please email [dlauro@hereandabove.com](mailto:dlauro@hereandabove.com).**