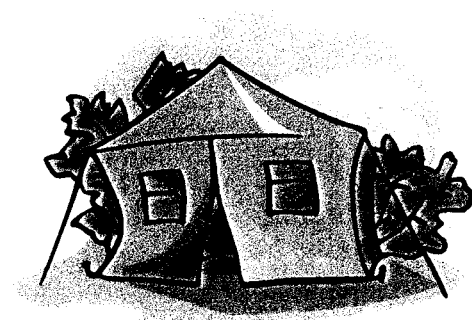
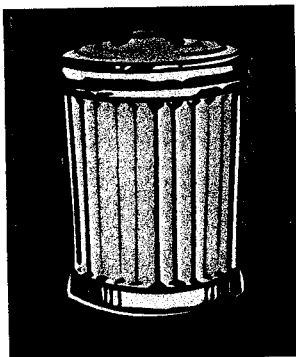
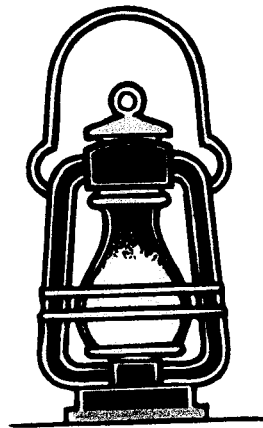
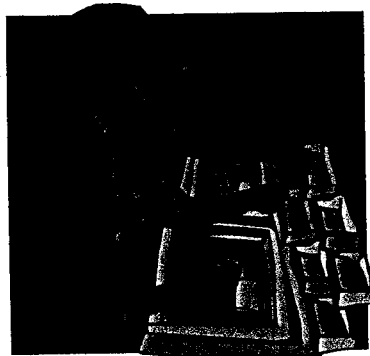
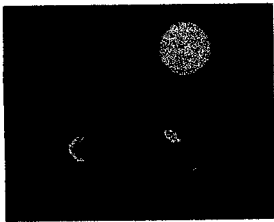
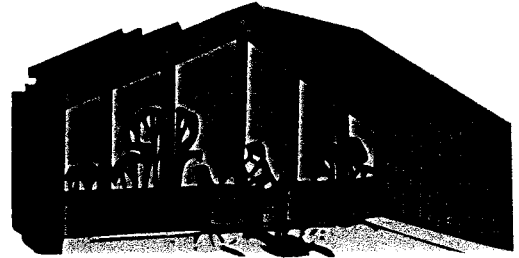


# Campsite Care Fall School 2006



## **FIRE CIRCLE**

- Clean out fire circle – remove partially burned logs
- See that surrounding area is clear of leaves, dry weeds, and anything else which doesn't belong in a fire
- Have safety equipment near, in several places; water bucket, rake or shovel
- Fire circle stones don't usually need to be moved; however, the circle in general should be slightly larger than your fire.
- When finished with charcoal, and it is not absolutely cold, place it in the ash bucket to ensure that it will not re-light.
- When getting ready to leave, spread the ashes evenly over the fire circle. **DO NOT** rake or dig out the fire circle leaving any dips or holes, these will catch water and may make the next fire harder to start.
- Be sure all rakes, shovels, buckets, etc., are put away.

## **WOOD PILE**

- Neatness counts – makes it easier to find what you need
- Stack wood with all pieces going the same direction, with smaller pieces (tinder) at one end and larger pieces (fuel) at the other. Kindling should be in the middle.
- Break wood the proper length to fit fireplaces and stoves
- Keep woodpile filled with tinder kindling, and fuel
- Cover woodpile at sundown (dew falls). Keep covered at night and whenever raining.

## TROOP/UNIT HOUSE

### Arrival

- Put large plastic bag in garbage cans
- Sweep – from the top down, sometimes you need to clear cobwebs etc, and it is easier to start at the top and work your way down
- Wipe counters, cabinets, benches and tables
- Store food and supplies

### Departure

- Pack food and supplies, remove everything you brought
- Empty garbage can
- Wipe counters, cabinets, tables and benches
- Stack benches
- Sweep then mop floor
- Check that all unit equipment has been replaced in the closet: buckets, brooms, grate etc.

# LATRINES

## Arrival

- Sweep, ceiling, walls and floor, start from top to bottom and then out the door, pick up any trash, don't leave it on ground
- Wipe toilet seats and lids with Clorox solution, or use the new Clorox wipes. If you have flush toilets, clean with brush.
- If you have pit latrines, remember only human waste or toilet tissue should be put in them
- Toilet paper and trash bags should be put out

## Departure

- Sweep, ceiling, walls and floor, start from top to bottom and then out the door, pick up any trash, don't leave it on ground
- Wipe toilet seats and lids with Clorox solution, or use the new Clorox wipes. If you have flush toilets, clean with brush.
- Toilet paper and trash bags need to be removed. Do not leave anything for the mice to make homes in.

# WASHHOUSE

## Arrival

- Sweep everything, remove dirt, cobwebs, leaves
- Clean water trough with cleanser, brush or sponge, rinse with water
- Hang up soap in a nylon stocking
- Put up trash bag and hand towel
- Put up clothes line on arrival

## Departure

- Sweep everything, remove dirt, cobwebs, leaves
- Clean water trough with cleanser, brush or sponge, rinse with water
- Remove soap, trash bag, hand towel and clothes line

## Lanterns

### Arrival

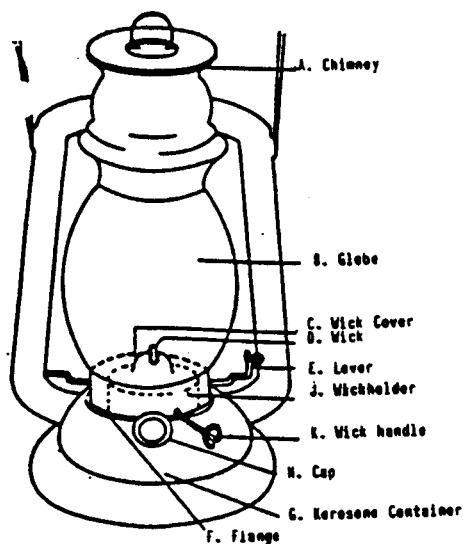
(Refer to Use and Care of a Kerosene Lantern handout)

- Kerosene lanterns are supplied at every GSCB campsite. Lanterns should be clean and full when you arrive. But if they are not:
- Before you start use a small amount of liquid dish soap to coat your hands and cuticles. This will make cleaning your hands much easier.
- Clean the globe with dry paper towel or newspaper
- Stick a stick up the chimney and bang it around to knock away as much soot as possible
- Check to see the wick is visible may need to replace or trim, only about 1/8 of an inch should be visible, leaving the wick too long while the lantern is lit will cause it to smoke and blacken the globe you just cleaned and reduce the amount of light showing through
- Use funnel to fill lantern with kerosene
- Lanterns should be cleaned and refilled daily. In addition to cleaning the globe and clearing the chimney you should use a dry cloth to wipe soot and ash from the body of the lantern as well.

### Departure

- Lanterns should be cleaned and refilled when you leave
- Return them to troop house

# USE AND CARE OF A KEROSENE LANTERN



## TO REPLACE WICK IN LANTERN:

1. Remove globe from lantern.
2. Remove wick cover (C) by disengaging the interlocking flanges (F) by turning wick cover counterclockwise.
3. Remove wick holder (J).
4. If any old wick remains in holder, remove it. Wick must be long enough to reach the kerosene in the kerosene container of lantern, or wick will not draw up kerosene to be burned.
5. New wick must be of suitable width to fit slot in wick holder. Wicks and slots come in several sizes. New wick should be threaded into bottom of the wick slot. This is sometimes a little difficult and may require the use of a knife blade, file, etc. to start it properly.
6. When wick has been inserted sufficiently far, teeth in the wick holder will grip it and it then can be turned up the rest of the way by rotating handle (K) that runs wick up and down.
7. Replace wick holder in lantern with long end of wick down in kerosene container.
8. Replace wick cover, replace globe, lower globe, and lantern is again ready to use.

## TO LIGHT LANTERN

1. Depress lever (E) to raise globe (B) to allow insertion of lighted match to ignite wick (D).
2. Wick may need to be turned up or down so that lantern will burn properly and not smoke globe. Turn wick by rotating handle (K). Clockwise turns wick up; counter clockwise turns wick down.
3. Raise lever (E) to lower globe back in place.

If lantern smokes after adjusting wick, wick may need to be trimmed. Cut wick straight across to make an even edge, and try lighting again.

## TO PUT OUT LANTERN

1. Depress lever (E) to raise globe.
2. Blow out flame. Do NOT turn wick down.
3. Lower globe into place.

## TO CLEAN LANTERN

1. Remove globe by:
  - depressing lever (E)
  - raising chimney (A)
  - letting globe tilt to side for easy removal
2. Clean globe by rubbing inside with paper (newspaper, paper towel, paper napkins, etc.)
- Clean chimney vents of carbon, if necessary, by using small stick on vent holes.
3. Wipe entire exterior of lantern with paper towel or newspaper to remove grease and carbon.

## VARIETIES OF KEROSENE LANTERNS

Not every kerosene lantern works exactly as the one illustrated. However, practically all of them operate in a similar manner. If you come across one that is slightly different, examine it, and take it apart. In all lanterns there will be a way to raise and lower the globe for lighting the lantern, to remove globe for cleaning, and to remove wick holder for replacing.

## USE OF LANTERN AT GIRL SCOUT CAMPS

When using lanterns provided at Girl Scout camps, you can expect to receive clean lanterns in good operating condition filled with kerosene and ready to use. You are expected to return them in like condition. If you are unfortunate enough to receive a lantern which does not operate, won't you please attempt to repair it yourself, thus leaving our camp property in better condition than you found it.

## TRASH

### Arrival

- Line cans with large size garbage bags, leaf and lawn/contractor bags work well, keep lids on
- When cans fill up make sure bags are tied and put in dumpster right away, it is not a good idea to tie it and leave it in the area.

### Departure

- Have girls police the entire area for any trash
- Remove bags from cans, replace lids and make sure the cans are inside the troop house.
- All GSCB camps have dumpsters except for Sandy Pines, you will need to take the trash home with you

# TENTS

## Arrival

- Sweep, top to bottom
- Wipe mattresses with sterilizing solution (sponge with Clorox and water, or Clorox wipes)
- Flaps (front and sides) should be 'rolled', not just tied up by the ties. If they want the doors open, that is.
  - To roll flaps – unbox the tent (take ropes out of the corners so front and side flaps are not attached)
  - Stand inside tent
  - For front/back flaps,
    - Take lower outside corner and fold in and up diagonally, so that it touches about the center of the flap
    - Take lower inside corner and fold in and up diagonally, so that it touches about the center of the flap, which makes the folded edge about parallel with the roofline
    - Begin rolling the folded edge until it meets the roofline
    - Tie the ties, using an overhand knot and half bow
  - for side flaps (this will take at least two people)
    - take lower outside corners and fold in and up diagonally
    - begin rolling from the bottom edge until it meets the roof
    - tie the ties using an overhand knot and a half bow
- Never spray anything in or near the tent. Spray can destroy the waterproof surface of the tent.
- Never have an open flame, candle, lantern etc in or near a tent
- Never store food or snacks in a tent or other shelter

# TENTS

## Departure

- To 'box' the tent
  - After lowering the sides, front and back flaps, overlap the front and sides using the roofline as a pattern (you will easily see which should be on the top and which on the bottom.)
  - Rethread the rope through the grommets, coming from the inside out through the top grommets, then in the next set of grommets and repeating until the bottom
  - Attach the rope to the frame or nail, which ever is there, using a half hitch. (If you don't know how to tie a half hitch, just tie the best you can so that it stays in place and is easily undone by the next person)
  - Sweep out the tent and pick up any trash from the surrounding area

STEPS IN DISHWASHING

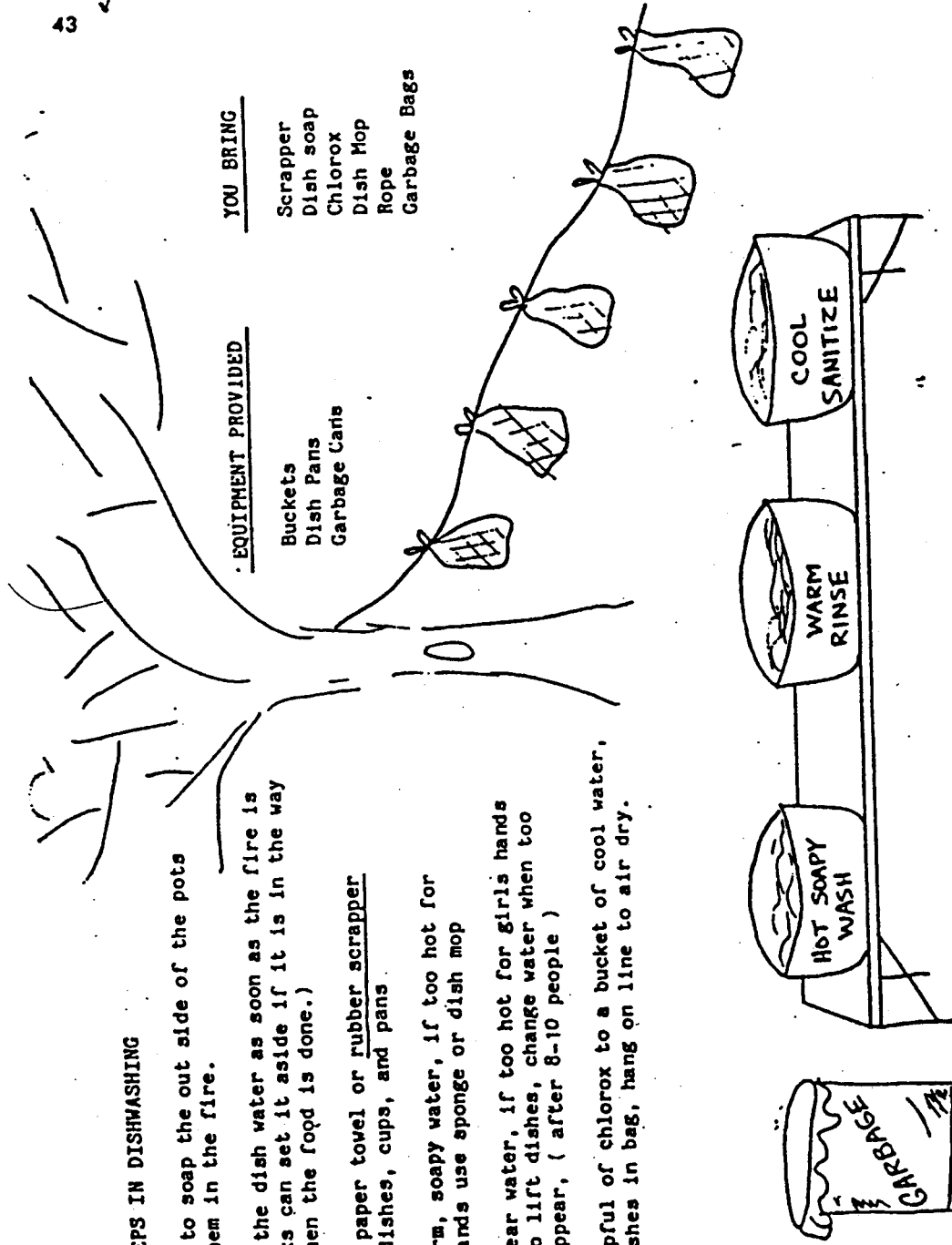
1. REMIND the cooks to soap the out side of the pots before placing them in the fire.
  2. REMEMBER: start the dish water as soon as the fire is started (the cooks can set it aside if it is in the way and replace it when the food is done.)
- SCRAPE:** Use napkin, paper towel or rubber scrapper  
Scrape all dishes, cups, and pans
- WASH:** Use very warm, soapy water, if too hot for the girls hands use sponge or dish mop
- RINSE:** Use warm clear water, if too hot for girls hands use tongs to lift dishes, change water when too many suds appear, ( after 8-10 people )
- SANITIZE:** Use 1 capful of chlorox to a bucket of cool water, place dishes in bag, hang on line to air dry.

YOU BRING

- Scraper
- Dish soap
- Chlorox
- Dish Mop
- Rope
- Garbage Bags

EQUIPMENT PROVIDED

- Buckets
- Dish Pans
- Garbage Cans



**NEW ECOLOGY TIP:** Stretch an old nylon stocking over one end of a bent clothes-hanger, pour dish water thru, also rinse water, this will collect the scrapes not scrapped off the dishes. The nylon may then be dumped into the trash bag...NO GARBAGE ON THE GROUND from the dish water.  
DUMP bleach water far into the woods, if put in dish water it will kill the tiny organisms needed to keep the earth clean.